



Excelbis Labs
1920 E Warner Avenue
Santa Ana, CA 92705

(714) 340-7099
http://excelbislabs.com
Lic# C8-0000059-LIC

QA Testing

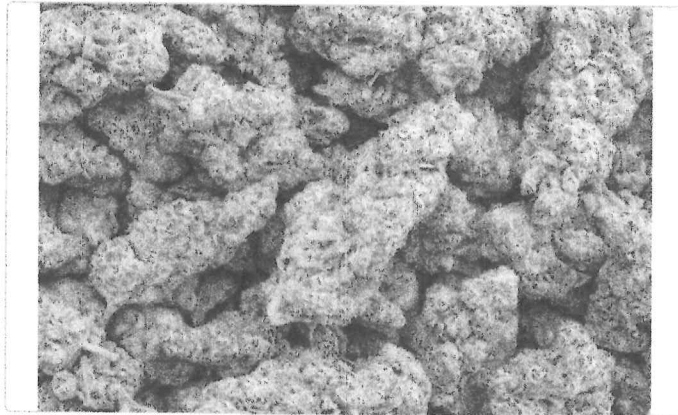
1 of 3

White Lemon

Sample ID: 2507EXL3458.14229
Strain: White Lemon
Matrix: Plant
Type: Flower - Cured
Sample Size: ; Batch:

Produced:
Collected:
Received:
Completed: 07/16/2025
Batch#: 2025Q3WLM

Client
HSP
Lic. #
516 D River Hwy #351
Mooresville, NC 28117



Summary

Test	Date Tested	Result
Batch		Pass
Cannabinoids		Complete
Foreign Matter	07/15/2025	Complete
Heavy Metals		Complete
Microbials		Complete
Mycotoxins		Pass
GCMS Pesticides		Pass
LCMS Pesticides		Pass

Cannabinoids

Complete

24.073% Total THC	ND Total CBD	25.987% Total Cannabinoids
-----------------------------	------------------------	--------------------------------------

Analyte	LOD	LOQ	Result	Result
	mg/g	mg/g	%	mg/g
CBC	0.009	0.025	ND	ND
CBD	0.025	0.050	ND	ND
CBDa	0.019	0.050	ND	ND
CBG	0.025	0.050	1.1045	11.045
CBN	0.009	0.025	0.8091	8.091
Δ8-THC	0.019	0.050	ND	ND
Δ9-THC	0.019	0.050	0.2977	2.977
THCa	0.013	0.025	27.1099	271.099
THCV	0.025	0.050	ND	ND
Total THC			24.073	240.731
Total CBD			ND	ND
Total CBG			1.104	11.045
Total			25.987	259.867

Date Tested:

Total THC = THCa * 0.877 + Δ9-THC + Δ8 THC; Total CBD = CBDa * 0.877 + CBD; Total CBG = CBGa * 0.877 + CBG.

Total Cannabinoids = Total THC + Total CBD + Total CBG + minor cannabinoids.

Cannabinoids: HPLC, SOP-004

Water Activity: Water Activity Meter, SOP-012

Moisture Content: Moisture Analyzer, SOP-011

Foreign Matter: Visual Inspection, SOP-001



Dr. Jerry White PhD Bryan Zahakaylo

Jerry White, PhD
Chief Scientific Officer
07/16/2025

Bryan Zahakaylo
Analyst
07/16/2025

Confident LIMS
All Rights Reserved
coa.support@confidentlms.com
(866) 506-5866
www.confidentlms.com



ND = Not Detected, NR = Not Reported, LOD = Limit of Detection, LOQ = Limit of Quantitation. This product has been tested by Excelbis Labs LLC using valid testing methodologies and a quality system as required by state law. All LQC samples were performed and met the prescribed acceptance criteria in 16 CCR section 5730, pursuant to 16 CCR section 5726(e)(13). Values reported relate only to the product tested. Excelbis Labs LLC makes no claims as to the efficacy, safety or other risks associated with any detected or non-detected levels of any compounds reported herein. This Certificate shall not be reproduced except in full, without the written approval of Excelbis Labs LLC. This Certificate of Analysis is limited to the sample tested in a batch. This Certificate does not make any representation or warranty for all Products within the tested Batch.



Excelbis Labs
1920 E Warner Avenue
Santa Ana, CA 92705

(714) 340-7099
http://excelbislabs.com
Lic# C8-0000059-LIC

White Lemon

Sample ID: 2507EXL3458.14229 Produced: Client
Strain: White Lemon Collected: HSP
Matrix: Plant Received: Lic. #
Type: Flower - Cured Completed: 07/16/2025 516 D River Hwy #351
Sample Size: ; Batch: Batch#: 2025Q3WLM Mooresville, NC 28117

GC Pesticides

Pass

Analyte	LOD	LOQ	Limit	Mass	Status
	µg/g	µg/g	µg/g	µg/g	
Captan	0.054	0.097	0.7	NR	NT
Chlordane (trans + cis)	0.058	0.098	0.058	NR	NT
Chlorfenapyr	0.056	0.097	0.056	NR	NT
Cyfluthrin	0.052	0.097	2	NR	NT
Cypermethrin	0.054	0.097	1	NR	NT
Parathion Methyl	0.039	0.097	0.039	NR	NT
Pentachloronitrobenzene (Quintozene)	0.062	0.097	0.1	NR	NT

Mycotoxins

Pass

Analytes	LOD	LOQ	Limit	Conc.	Status
	µg/kg	µg/kg	µg/kg	µg/kg	
Aflatoxin B1	4.0000	5.0000		NR	NT
Aflatoxin B2	4.0000	5.0000		NR	NT
Aflatoxin G1	4.0000	5.0000		NR	NT
Aflatoxin G2	4.0000	5.0000		NR	NT
Ochratoxin A	10.0000	16.0000	20	NR	NT
Total Aflatoxins			20	ND	Pass

Microbials

Complete

Analyte	Limit	Detected / Not Detected	Status
	RFU/g	RFU/g	
Aspergillus flavus	0	NR	NT
Aspergillus fumigatus	0	NR	NT
Aspergillus niger	0	NR	NT
Aspergillus terreus	0	NR	NT
Shiga toxin-producing E. Coli	0	NR	NT
Salmonella SPP	0	NR	NT

Heavy Metals

Complete

Analyte	LOD	LOQ	Limit	Conc.	Status
	PPM	PPM	PPM	PPM	
Arsenic	0.0150	0.05	0.2	NR	NT
Cadmium	0.0113	0.05	0.2	NR	NT
Lead	0.00615	0.05	0.5	NR	NT
Mercury	0.00126	0.005	0.1	NR	NT

GCMS Date Tested:
Pesticides: GC-MS/MS. GCMS Method SOP-006
LCMS Date Tested:
Mycotoxins Footnote: Mycotoxins: LC-MS/MS, LCMS Method LCP-SOP-001
Microbial Date Tested:
Microbials Footnote: Microbial: SOP-010
RFU = Relative Fluorescence Units
Heavy Metals Date Tested:
Heavy Metals: Heavy Metals: ICP-MS, SOP-007



Dr. Jerry White PhD Bryan Zahakaylo

Jerry White, PhD
Chief Scientific Officer

Bryan Zahakaylo
Analyst

Confident LIMS
All Rights Reserved
coa.support@confidentlms.com
(866) 506-5866
www.confidentlms.com



ND = Not Detected, NR = Not Reported, LOD = Limit of Detection, LOQ = Limit of Quantitation. This product has been tested by Excelbis Labs LLC using valid testing methodologies and a quality system as required by state law. All LQC samples were performed and met the prescribed acceptance criteria in 16 CCR section 5730, pursuant to 16 CCR section 5726(e)(13). Values reported relate only to the product tested. Excelbis Labs LLC makes no claims as to the efficacy, safety or other risks associated with any detected or non-detected levels of any compounds reported herein. This Certificate shall not be reproduced except in full, without the written approval of Excelbis Labs LLC. This Certificate of Analysis is limited to the sample tested in a batch. This Certificate does not make any representation or warranty for all Products within the tested Batch.



Excelbis Labs
1920 E Warner Avenue
Santa Ana, CA 92705

(714) 340-7099
http://excelbislabs.com
Lic# C8-0000059-LIC

White Lemon

Sample ID: 2507EXL3458.14229	Produced:	Client
Strain: White Lemon	Collected:	HSP
Matrix: Plant	Received:	Lic. #
Type: Flower - Cured	Completed: 07/16/2025	516 D River Hwy #351
Sample Size: ; Batch:	Batch#: 2025Q3WLM	Mooresville, NC 28117

LC Pesticides

Pass

Analyte	LOD	LOQ	Limit	Result	Status	Analyte	LOD	LOQ	Limit	Result	Status
	µg/g	µg/g	µg/g	µg/g			µg/g	µg/g	µg/g	µg/g	
Abamectin	0.043	0.097	0.1	NR	NT	Imazalil	0.029	0.097	0.029	NR	NT
Acephate	0.019	0.097	0.1	NR	NT	Imidacloprid	0.021	0.097	5	NR	NT
Acequinocyl	0.031	0.097	0.1	NR	NT	Kresoxim Methyl	0.045	0.097	0.1	NR	NT
Acetamiprid	0.023	0.097	0.1	NR	NT	Malathion	0.027	0.097	0.5	NR	NT
Aldicarb	0.029	0.097	0.029	NR	NT	Metalaxyl	0.029	0.097	2	NR	NT
Azoxystrobin	0.025	0.097	0.1	NR	NT	Methiocarb	0.029	0.097	0.029	NR	NT
Bifenazate	0.031	0.097	0.1	NR	NT	Methomyl	0.029	0.097	1	NR	NT
Bifenthrin	0.033	0.097	3	NR	NT	Mevinphos	0.033	0.1	0.033	ND	Pass
Boscalid	0.021	0.097	0.1	NR	NT	Myclobutanil	0.047	0.097	0.1	NR	NT
Carbaryl	0.025	0.097	0.5	NR	NT	Naled	0.033	0.097	0.1	NR	NT
Carbofuran	0.033	0.097	0.033	NR	NT	Oxamyl	0.021	0.097	0.5	NR	NT
Chlorantraniliprole	0.025	0.097	10	NR	NT	Pacllobutrazol	0.027	0.097	0.027	NR	NT
Chlorpyrifos	0.019	0.097	0.019	NR	NT	Permethrin (trans + cis)	0.033	0.1	0.5	ND	Pass
Clofentezine	0.035	0.097	0.1	NR	NT	Phosmet	0.051	0.097	0.1	NR	NT
Coumaphos	0.039	0.097	0.039	NR	NT	Piperonyl Butoxide	0.037	0.097	3	NR	NT
Daminozide	0.019	0.097	0.019	NR	NT	Prallethrin	0.047	0.097	0.1	NR	NT
Diazinon	0.031	0.097	0.1	NR	NT	Propiconazole	0.023	0.097	0.1	NR	NT
Dichlorvos	0.06	0.097	0.06	NR	NT	Propoxur	0.027	0.097	0.027	NR	NT
Dimethoate	0.027	0.097	0.027	NR	NT	Pyrethrins (Cinerin + Jasmolin + Pyrethrin)	0.0133	0.04	0.5	ND	Pass
Dimethomorph (I + II)	0.033	0.1	2	ND	Pass	Pyridaben	0.033	0.1	0.1	NR	NT
Ethoprophos	0.023	0.097	0.023	NR	NT	Spinetoram (J + L)	0.033	0.1	0.1	ND	Pass
Etofenprox	0.041	0.097	0.041	NR	NT	Spinosyn (A + D)	0.033	0.1	0.1	ND	Pass
Etoxazole	0.027	0.097	0.1	NR	NT	Spiromesifen	0.047	0.097	0.1	NR	NT
Fenhexamid	0.031	0.097	0.1	NR	NT	Spirotetramat	0.019	0.097	0.1	NR	NT
Fenoxycarb	0.041	0.097	0.041	NR	NT	Spiroxamine	0.025	0.097	0.025	NR	NT
Fenpyroximate	0.023	0.097	0.1	NR	NT	Tebuconazole	0.027	0.097	0.1	NR	NT
Fipronil	0.037	0.097	0.037	NR	NT	Thiacloprid	0.033	0.097	0.033	NR	NT
Flonicamid	0.039	0.097	0.1	NR	NT	Thiamethoxam	0.027	0.097	5	NR	NT
Fludioxonil	0.029	0.097	0.1	NR	NT	Trifloxystrobin	0.037	0.097	0.1	NR	NT
Hexythiazox	0.043	0.097	0.1	NR	NT						

LCMS Date Tested:
Pesticides: LC-MS/MS. LCMS Method SOP-005



Accreditation #128081
ISO/IEC 17025:2017

Dr. Jerry White PhD Bryan Zahakaylo

Jerry White, PhD
Chief Scientific Officer

Bryan Zahakaylo
Analyst

Confident LIMS
All Rights Reserved
coa.support@confidentlms.com
(866) 506-5866
www.confidentlms.com



ND = Not Detected, NR = Not Reported, LOD = Limit of Detection, LOQ = Limit of Quantitation. This product has been tested by Excelbis Labs LLC using valid testing methodologies and a quality system as required by state law. All LQC samples were performed and met the prescribed acceptance criteria in 16 CCR section 5730, pursuant to 16 CCR section 5726(e)(13). Values reported relate only to the product tested. Excelbis Labs LLC makes no claims as to the efficacy, safety or other risks associated with any detected or non-detected levels of any compounds reported herein. This Certificate shall not be reproduced except in full, without the written approval of Excelbis Labs LLC. This Certificate of Analysis is limited to the sample tested in a batch. This Certificate does not make any representation or warranty for all Products within the tested Batch.